



OPERATING INSTRUCTIONS | DIGITAL-TO-ANALOG CONVERTER

OL DAC

SUPPORT

ONLINE

CONTACT@JDSELABS.COM
JDSELABS.COM/SUPPORT

BY PHONE

314-252-0936
9:30AM-6PM CST,
MONDAY THROUGH FRIDAY

BY MAIL

909 N BLUFF RD
COLLINSVILLE, IL 62234
UNITED STATES

QUICK SETUP

STEP 01

Connect AC power adapter to rear power jack (15V), then connect to wall outlet.

STEP 03

Press the Power button on the front.

STEP 02

Connect cables to your desired digital audio players (USB and/or TOSLINK), and connect an RCA output cable to your amplifier.

STEP 04

Select USB or OPTICAL input using the Mode switch.

CONFIGURATION

CONNECTIVITY

OL DAC accepts two methods of digital input:

USB	16/44.1k thru 24/96kHz
TOSLINK	16/8kHz thru 24/192kHz*

Maximum RCA Output voltage is 2.0VRMS.

*Many optical sources are unable to reliably transmit at 192kHz.

LISTENING TIPS

For maximum signal fidelity, set the DAC to 24-bit audio and adjust digital volume slightly below 100% at your computer. Only control volume from your amplifier.

To ensure an optimal noise floor, always position audio equipment as far away as possible from wireless devices.

Listen safely to conserve your hearing:
www.hearingloss.org

When using USB mode, set sampling rate to the highest integer multiple of your music collection. For example, use 24/88.2kHz for a collection of 44.1k or 88.2k files. Use 24/96kHz for a collection of 48k or 96k audio files.

OL DAC automatically selects appropriate sampling rate on Optical mode. Optical mode is optimized for 44.1k, 48k, 172.6k, and 192k sampling rates.

OPERATING CARE

Use gentle force when inserting or removing cables.

SETUP

COMPUTER SETUP

OL DAC requires no drivers in Windows, Mac OS X, or Linux. Most operating systems immediately recognize and set the DAC as the default playback device. To manually select the playback device in:

Windows Vista/7/8/10

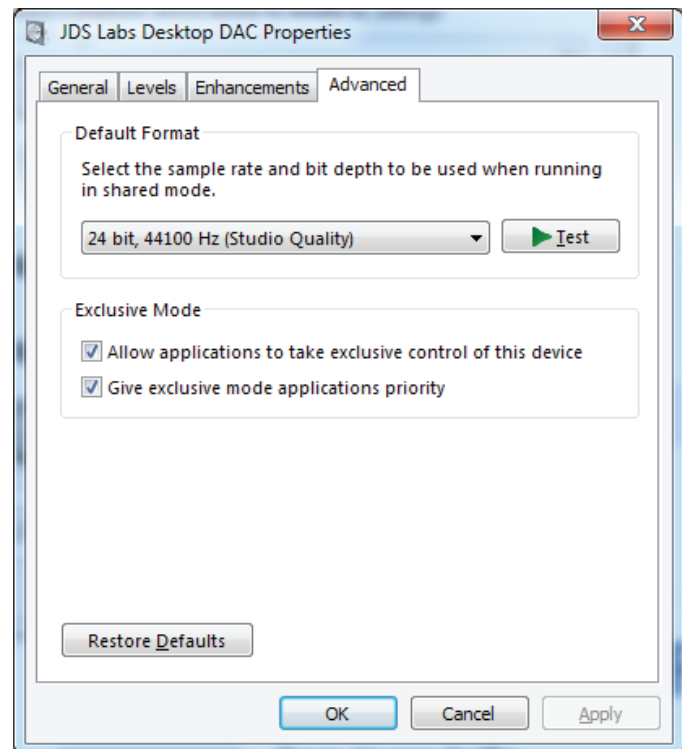
Right click volume icon in taskbar, click Playback Devices, set JDS Labs OL DAC as default device.

Suggested Properties (right click JDS EL DAC “Speakers” icon):

- Enhancements: Check “Disable all enhancements”
- Advanced: See Listening Tips

Mac OS X

Ensure OL DAC is selected from Audio Devices



TROUBLESHOOTING

USB device unable to initialize

Cause: Bad USB cable or incorrect drivers

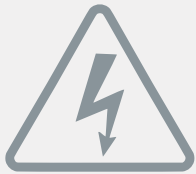
Solution: Try another USB cable or refer to jdslabs.com/troubleshooting

No sound in one channel

Cause: Bad cable, or incorrect computer settings

Solution: Check balance settings; try another headphone or RCA cable.

Some Mac OS X systems will pan audio to the Left channel upon initial connection of a DAC. User must restore balance to center.



POWER ADAPTERS

ATTENTION: Incorrect power adapters can result in capacitor explosion hazards and device damage. Only use the power adapter included with your OL DAC.

Type: AC-to-AC Transformer	Output Voltage: 15-16 VAC
Current: Minimum 500mA	Connector: 2.1x5.5mm (ID x OD)



Application for Council Directives 2004/108/EC, 2006/95/EC, 2002/95/EC. Conformity declared for EN55022:2011, EN611000-3-2, EN61000-3-3, EN55024-2



This equipment has been tested and found to comply with the limits for a Class B digital device, pursuant to part 15 of the FCC Rules.